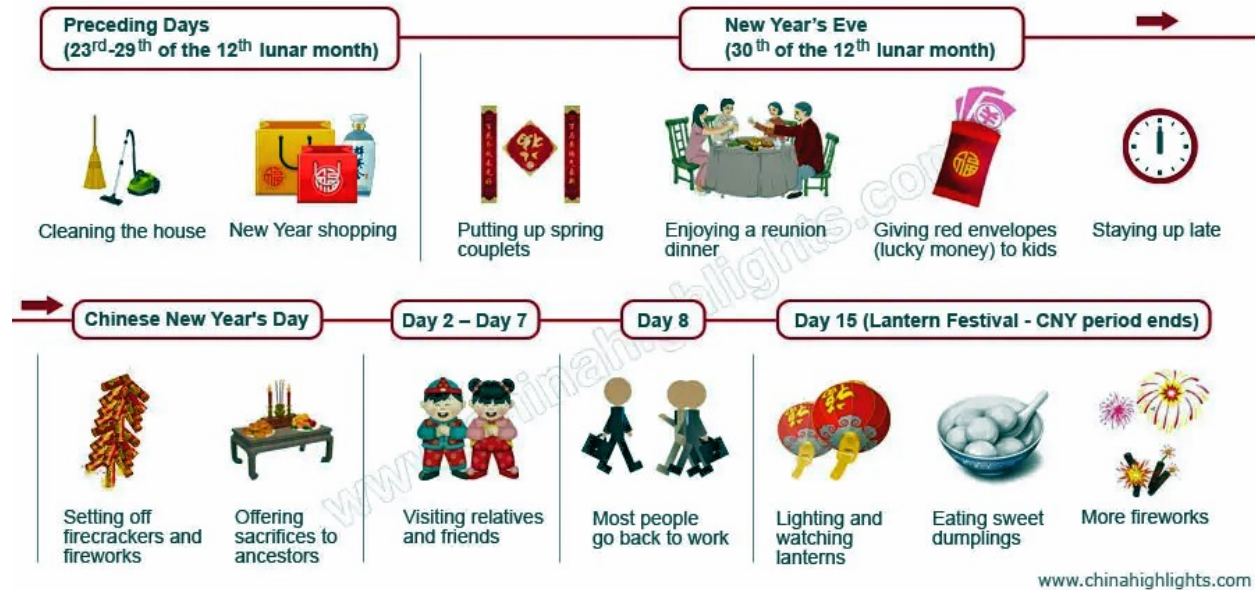


# Chinese New Year - Spring Festival

## Chinese New Year Celebrations



## How China celebrates Chinese New Year

Chinese New Year is the most important holiday in China. It is tied to the Chinese lunar calendar and begins on the new moon that appears between January 21 and February 20. In China it is celebrated as a 16-day "Spring Festival" and is a time where everyone reunites with their family. Typically in modern China most of the elderly parents live in rural villages while their children work in the cities. Tradition has it that throughout China, everyone migrates back home to have a reunion dinner on the New Year's eve. This social practice is referred to as the "Spring Migration".